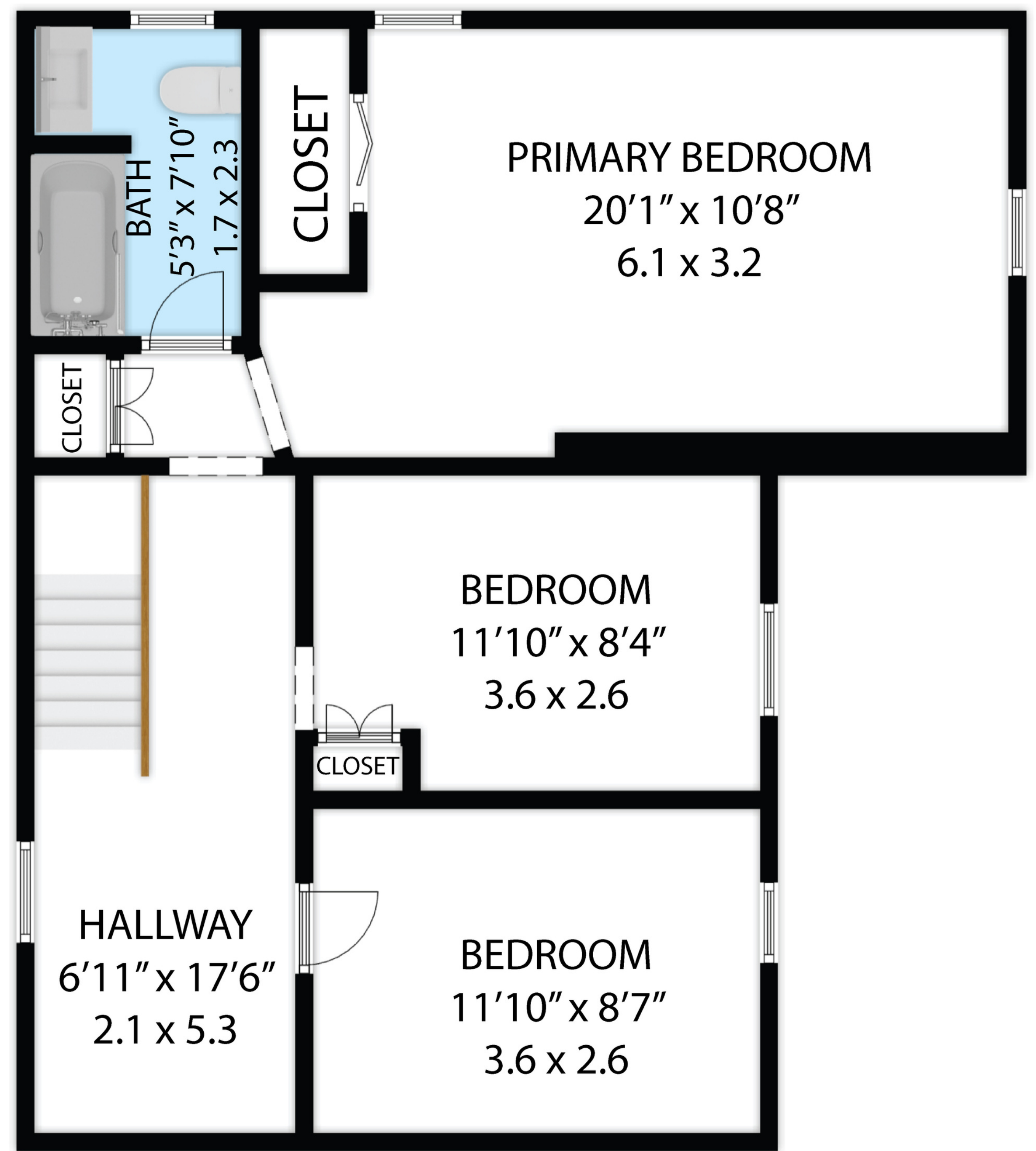


MAIN FLOOR



SECOND FLOOR

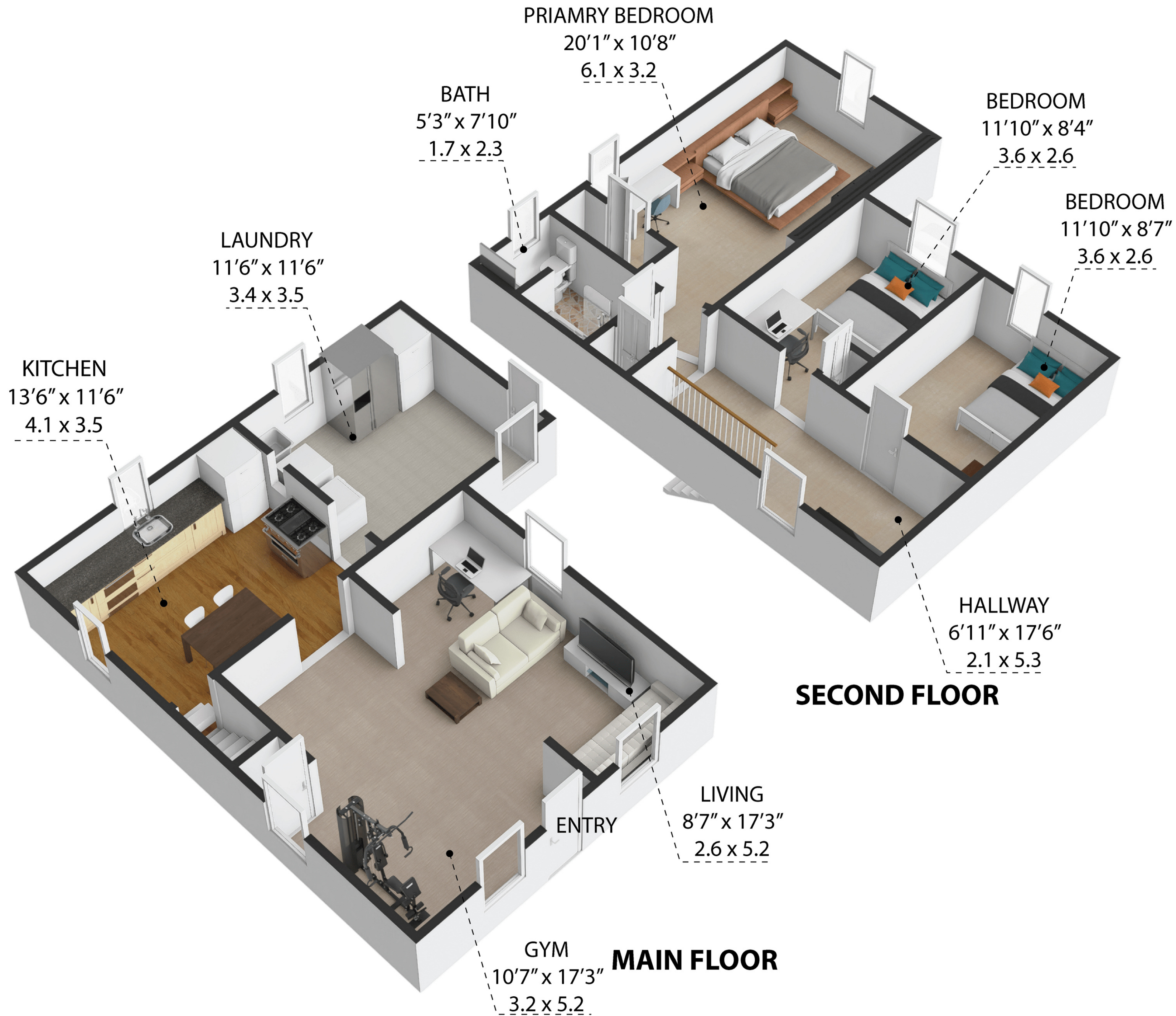
1086 Westover Rd

TOTAL APPROX. FLOOR AREA 1,368 SQ.FT - 127 SQ.M

Whilst every attempt has been made to ensure the accuracy of the floor plan contained here, measurements of doors, windows, rooms and any other items are approximate and no responsibility is taken for any error, omission, or misstatement. This plan is for illustrative purposes only and should be used as such by any prospective purchaser.

MAIN FLOOR	:	680 SQ.FT - 63 SQ.M
SECOND FLOOR	:	688 SQ.FT - 64 SQ.M
TOTAL AREA	:	1,368 SQ.FT - 127 SQ.M





1086 Westover Rd

TOTAL APPROX. FLOOR AREA 1,368 SQ.FT - 127 SQ.M

Whilst every attempt has been made to ensure the accuracy of the floor plan contained here, measurements of doors, windows, rooms and any other items are approximate and no responsibility is taken for any error, omission, or misstatement. This plan is for illustrative purposes only and should be used as such by any prospective purchaser.

MAIN FLOOR	:	680 SQ.FT - 63 SQ.M
SECOND FLOOR	:	688 SQ.FT - 64 SQ.M
TOTAL AREA	:	1,368 SQ.FT - 127 SQ.M