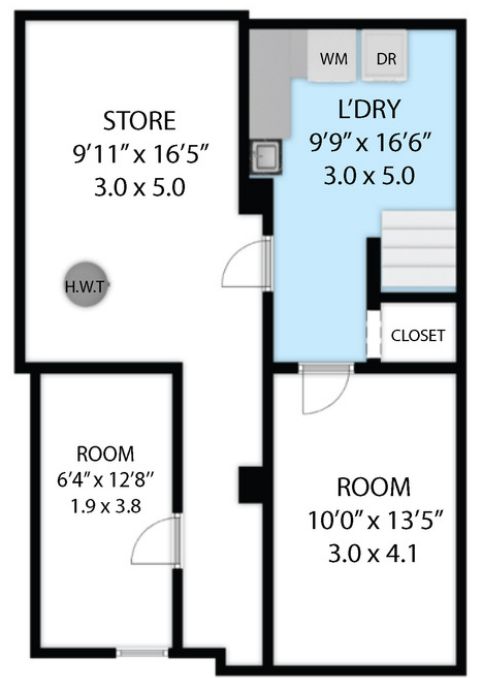
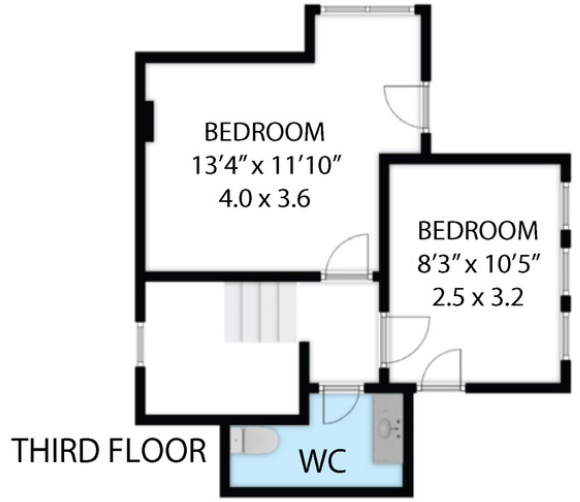


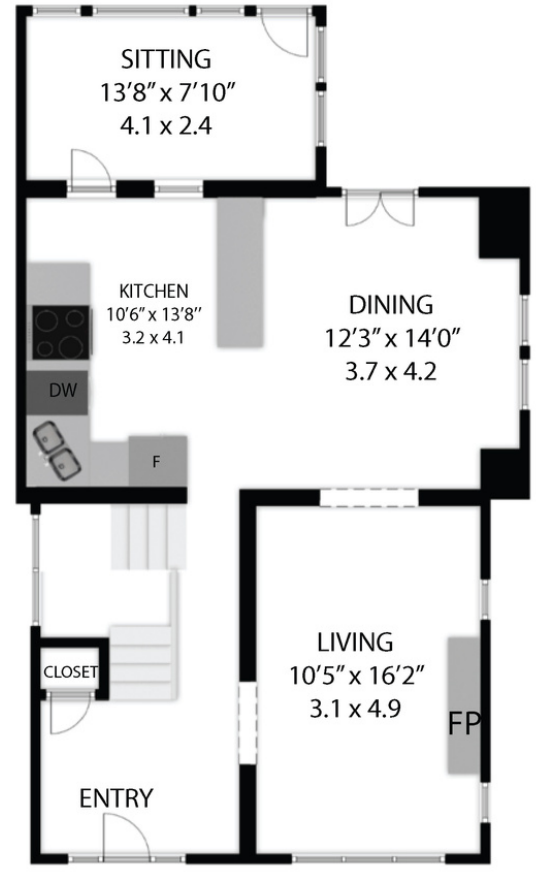
SECOND FLOOR



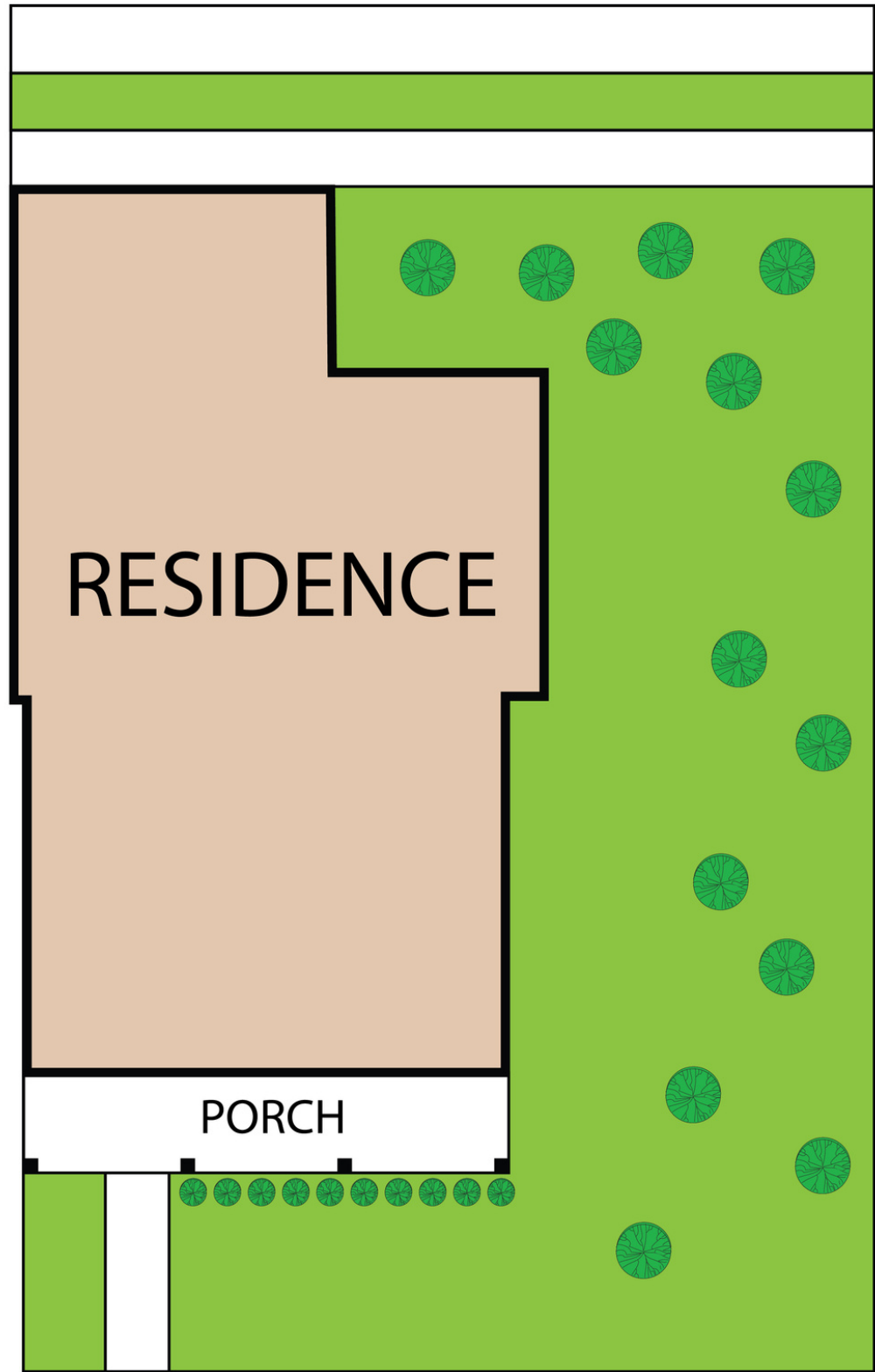
BASEMENT



THIRD FLOOR



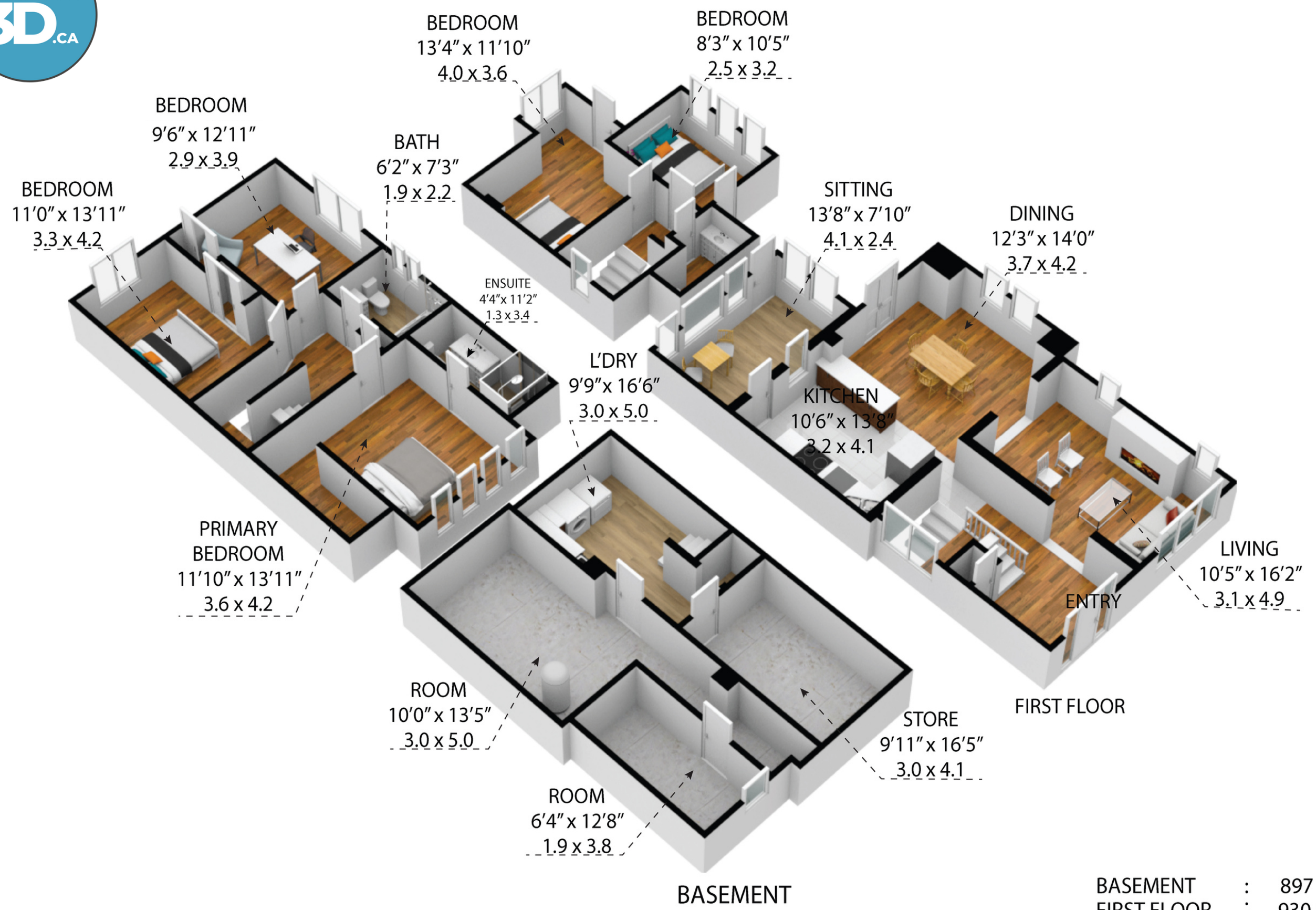
FIRST FLOOR



BASEMENT	:	897 SQ.FT - 83 SQ.M
FIRST FLOOR	:	930 SQ.FT - 86 SQ.M
SECOND FLOOR	:	803 SQ.FT - 74 SQ.M
THIRD FLOOR	:	400 SQ.FT - 37 SQ.M
TOTAL AREA	:	3,030 SQ.FT - 280 SQ.M

194 Sanford Avenue S
 TOTAL APPROX. FLOOR AREA 3,030 SQ.FT - 280 SQ.M

Whilst every attempt has been made to ensure the accuracy of the floor plan contained here, measurements of doors, windows, rooms and any other items are approximate and no responsibility is taken for any error, omission, or misstatement. This plan is for illustrative purposes only and should be used as such by any prospective purchaser.



194 Sanford Avenue S
 TOTAL APPROX. FLOOR AREA 3,030 SQ.FT - 280 SQ.M

Whilst every attempt has been made to ensure the accuracy of the floor plan contained here, measurements of doors, windows, rooms and any other items are approximate and no responsibility is taken for any error, omission, or misstatement. This plan is for illustrative purposes only and should be used as such by any prospective purchaser.

BASEMENT	:	897 SQ.FT - 83 SQ.M
FIRST FLOOR	:	930 SQ.FT - 86 SQ.M
SECOND FLOOR	:	803 SQ.FT - 74 SQ.M
THIRD FLOOR	:	400 SQ.FT - 37 SQ.M
TOTAL AREA	:	3,030 SQ.FT - 280 SQ.M