

TUNIS STREET
(MUNICIPAL ROAD - 18.29 WIDE)

CAUTION

- (A) THIS IS NOT A PLAN OF SURVEY AND SHALL NOT BE USED EXCEPT FOR THE PURPOSE INDICATED IN THE TITLE BLOCK.
- (B) THIS SKETCH IS PROTECTED BY COPYRIGHT.

NOTE: THIS SKETCH IS NOT A PLAN OF SURVEY

SKETCH FOR PLANNING PURPOSES ONLY

66 TUNIS STREET
CITY OF ST. CATHARINES
REGIONAL MUNICIPALITY OF NIAGARA
SCALE 1 : 200



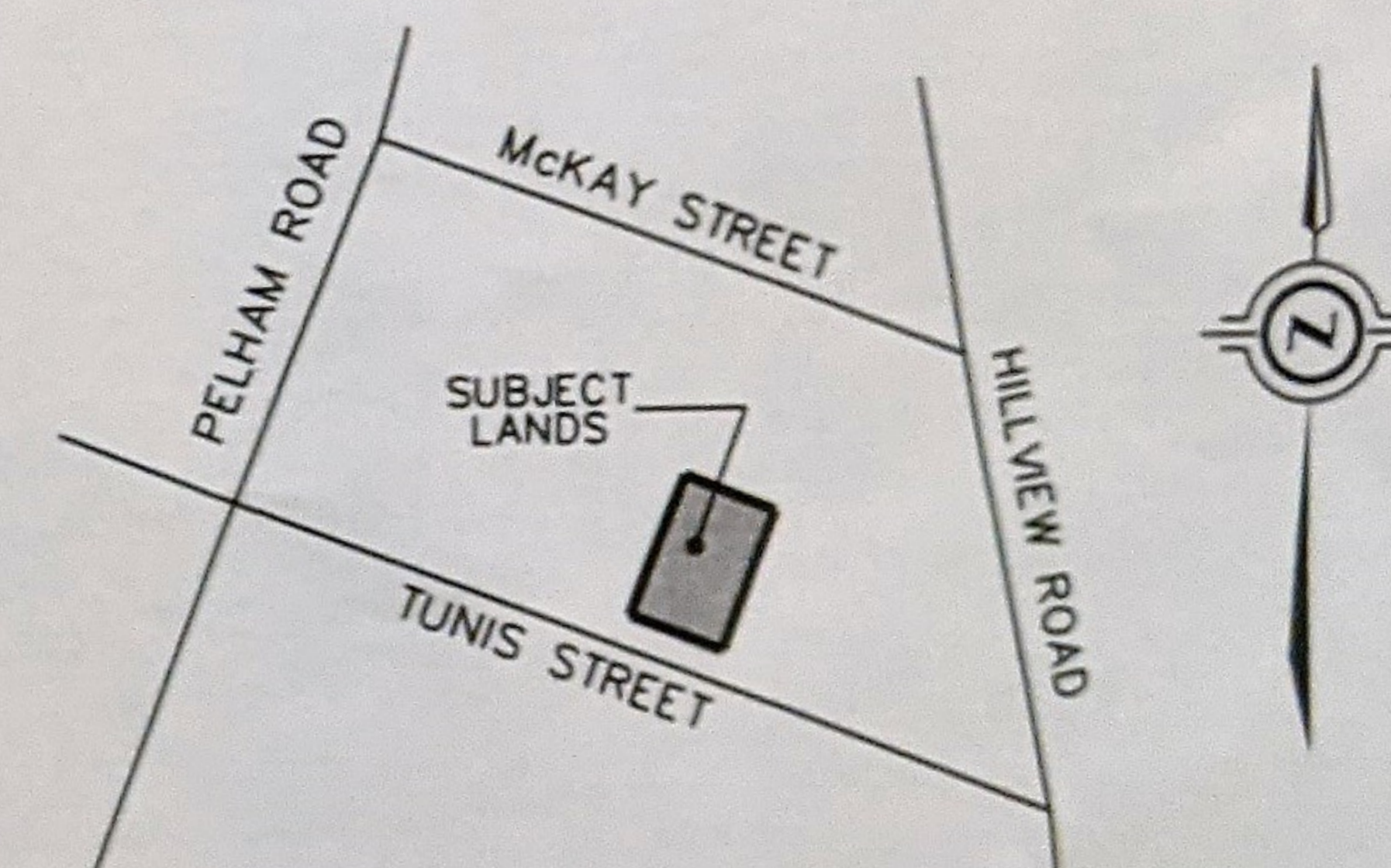
J.D. BARNES LIMITED

© COPYRIGHT 2021

METRIC NOTE

DISTANCES SHOWN ON THIS PLAN ARE IN METRES AND CAN BE CONVERTED TO FEET BY DIVIDING BY 0.3048

KEY PLAN (not to scale)



CITY OF ST. CATHARINES

LEGAL DESCRIPTION

LOTS 569 AND 570, TP PLAN 94

BOUNDARY INFORMATION HAS BEEN DERIVED FROM AVAILABLE RECORDS AND/OR FIELD MEASUREMENTS. THIS IS NOT A PLAN OF SURVEY.

SOME FEATURES SHOWN ON THIS SKETCH HAVE BEEN DIGITIZED FROM AERIAL PHOTOGRAPHY - LOCATION IS APPROXIMATE.

JUNE 7, 2021
DATE

[Signature]
DASHA PAGE
ONTARIO LAND SURVEYOR



J.D. BARNES
LIMITED

LAND INFORMATION SPECIALISTS
4318 PORTAGE ROAD - UNIT 2, NIAGARA FALLS, ON L2E 6A4
T: (905) 358-3693 F: (905) 358-6224 www.jdbarnes.com

SURVEYING
MAPPING
GIS

TW	DRAWN
AH	CHECKED
DATED:	MAY 21/2021
Ref. No.	21-16-040-00