

SURVEYOR'S REAL PROPERTY REPORT
 PART 1, PLAN OF
BLOCK 7
PLAN 62M-1226
 IN THE
CITY OF HAMILTON
 SCALE: 1:200 metres

S.D. McLAREN, O.L.S. - 2016



SURVEYOR'S REAL PROPERTY REPORT
 (PART 2)

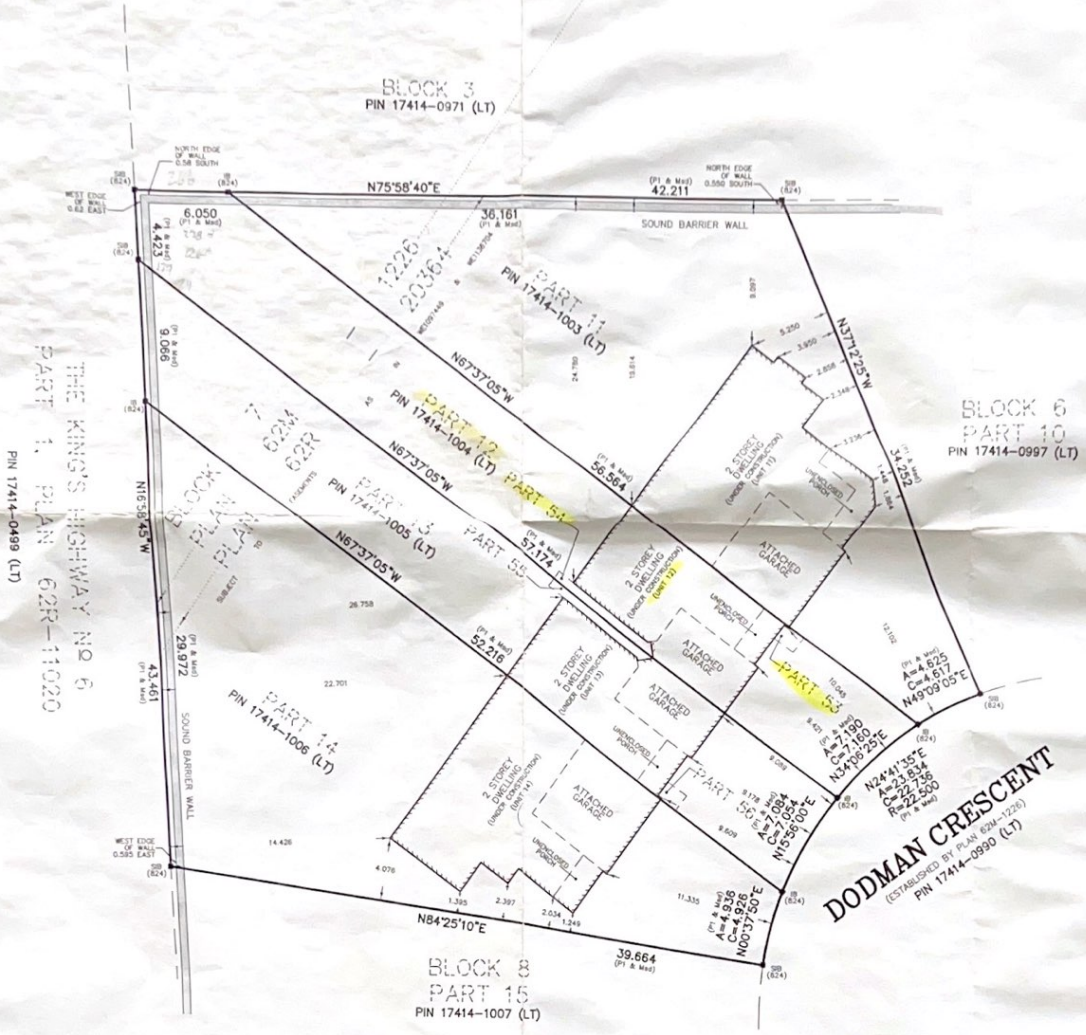
BLOCK 7, PLAN 62M-1226, DESIGNATED AS PARTS 11-14 INCLUSIVE, AND PARTS 53-56 INCLUSIVE, PLAN 62R-20364 ARE SUBJECT TO AN EASEMENT IN GROSS AS IN W1097449, AND SUBJECT TO AN EASEMENT FOR ENTRY AS IN W1136704, AS ILLUSTRATED ON THE PLAN.

THIS PLAN DOES NOT CERTIFY COMPLIANCE WITH ZONING BY-LAWS.

THIS PLAN WAS PREPARED FOR LOSANI HOMES LTD.

ASSOCIATION OF ONTARIO LAND SURVEYORS
 PLAN SUBMISSION FORM
 1986475

THIS PLAN IS NOT VALID UNLESS IT IS AN IMPROVED ORIGINAL COPY ISSUED BY THE SURVEYOR IN ACCORDANCE WITH REGULATION 182R, SECTION 2(9.1)



METRIC NOTE
 DISTANCES SHOWN ON THIS PLAN ARE IN METRES AND CAN BE CONVERTED TO FEET BY DIVIDING BY 0.3048

BEARING NOTE:
 BEARINGS ARE UTM GRID AND ARE REFERRED TO UTM ZONE 17, NAD83 (CGRS) (1997.0)

DISTANCES ARE GROUND AND CAN BE CONVERTED TO GRID BY MULTIPLYING BY THE COMBINED SCALE FACTOR OF 0.9996551.

LEGEND:

- DENOTES MONUMENT SET
- MONUMENT FOUND
- SB IRON BAR
- SIB STANDARD IRON BAR
- SSB SHORT STANDARD IRON BAR
- 824 A.T. McLAREN, O.L.S. MEASURED
- M4E PLAN 62R-20364
- P1

SURVEYOR'S CERTIFICATE:

1. THIS SURVEY AND PLAN ARE CORRECT AND IN ACCORDANCE WITH THE SURVEYORS ACT, THE SURVEYORS REGULATIONS AND THE REGULATIONS MADE UNDER THEM.
2. THE SURVEY WAS COMPLETED ON THE 21ST DAY OF AUGUST, 2016.

AUGUST 31, 2016
 DATE

S.D. McLAREN, O.L.S.

NOTE:
 AT.M CONTROL POINTS 99, 4697 & 4697 HAS BEEN USED TO RE-ESTABLISHED THE BOUNDARIES OF BLOCK 7

© S.D. McLAREN, O.L.S. - 2016. NO PART OF THIS COPY REPRODUCE, DISTRIBUTE OR ALTER THIS PLAN IN WHOLE OR IN PART WITHOUT THE WRITTEN PERMISSION OF S.D. McLAREN, O.L.S.



A.T. McLaren Limited
 LEGAL AND ENGINEERING SURVEYS

89 JOHN STREET SOUTH, SUITE 230
 HAMILTON, ONTARIO, L8N 2B9

PHONE: (905) 521-8558 FAX: (905) 521-0033

Drawn: HP Checked: RBM Scale: 1:200 Cmg No: 34841-BLK-7-1