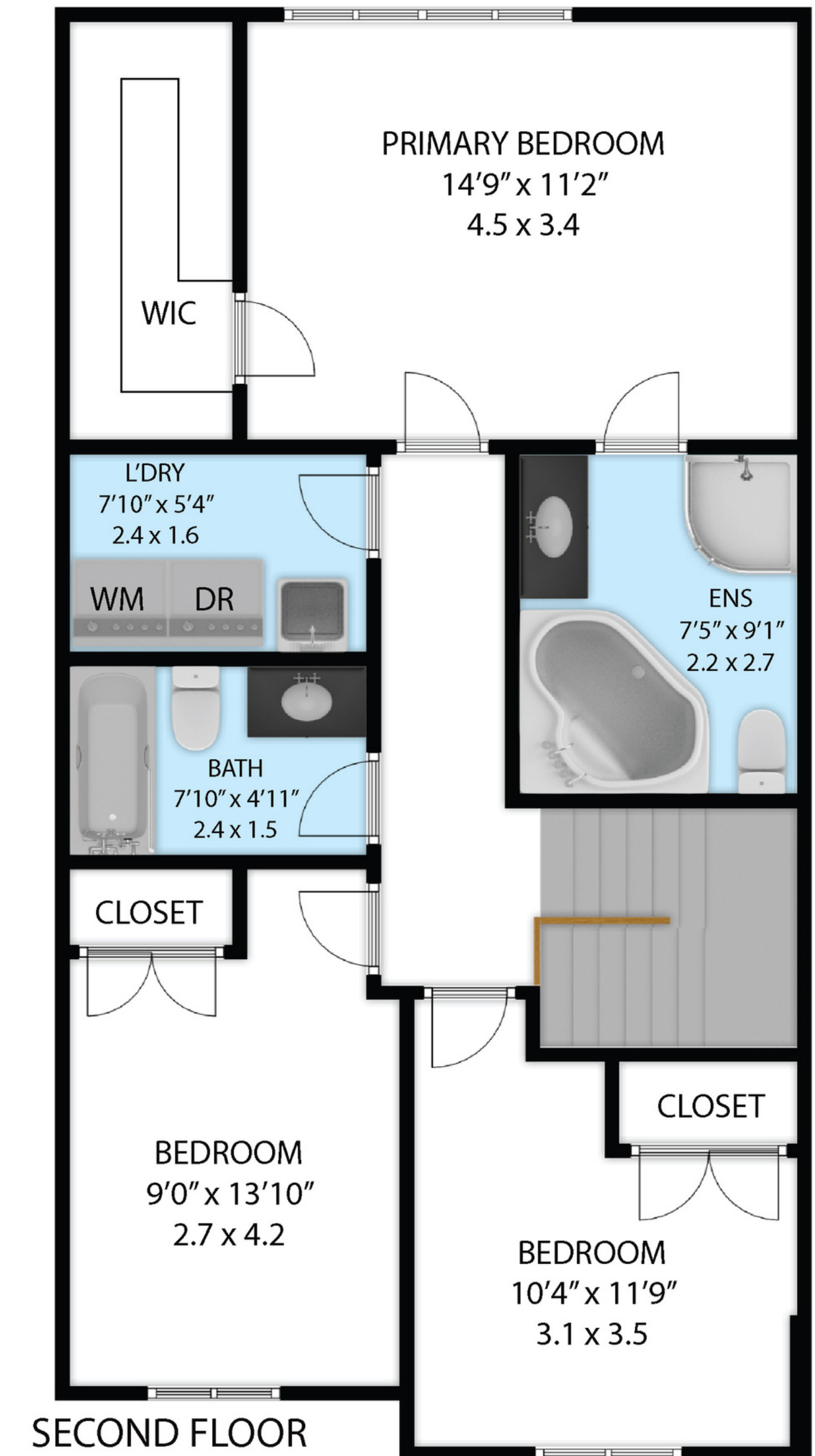
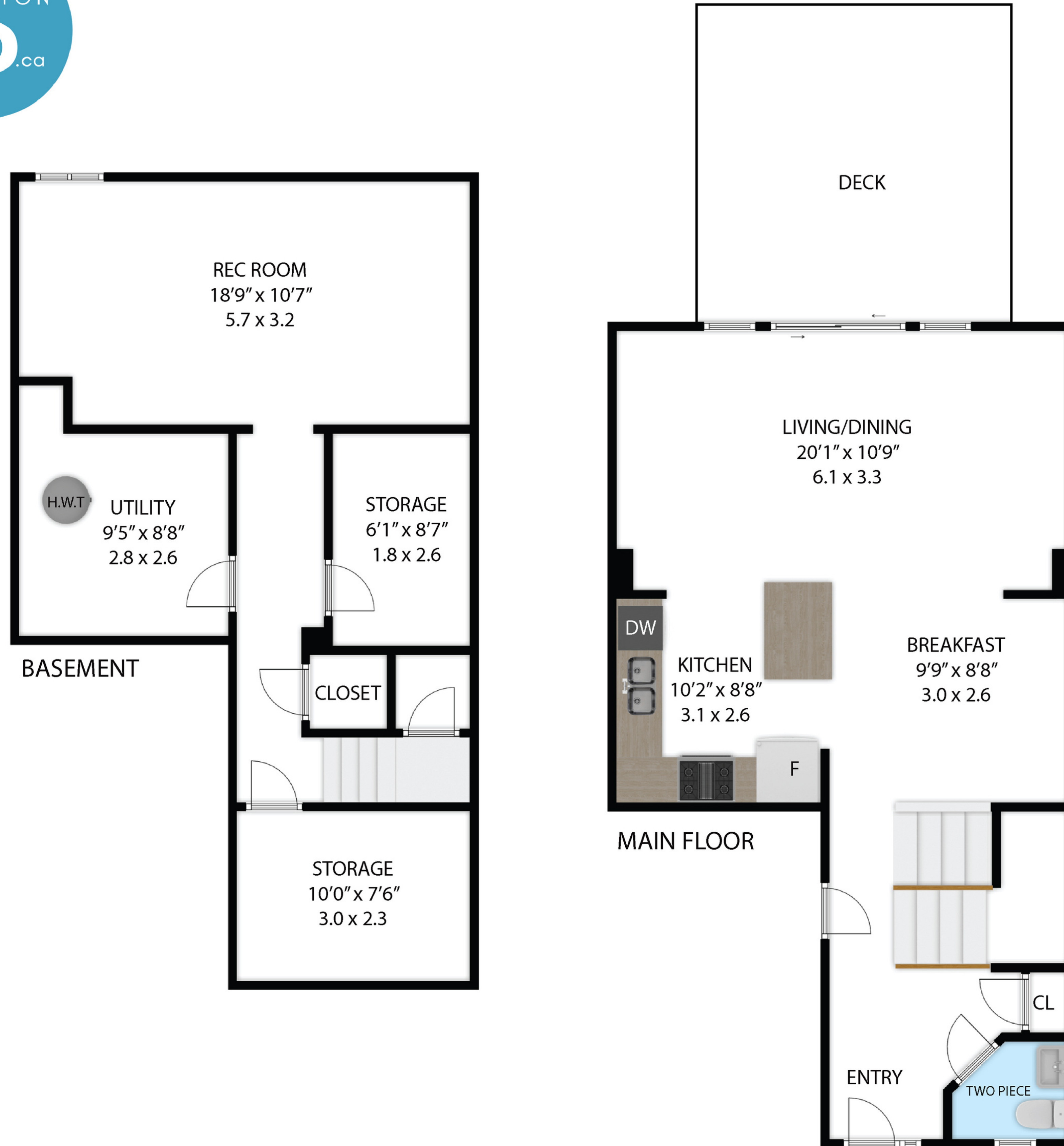


55 Dodman Crescent

TOTAL APPROX. FLOOR AREA 2,009 SQ.FT , 186 SQ.M

Whilst every attempt has been made to ensure the accuracy of the floor plan contained here, measurements of doors, windows, rooms and any other items are approximate and no responsibility is taken for any error, omission, or misstatement. This plan is for illustrative purposes only and should be used as such by any prospective purchaser.

BASEMENT	:	575 SQ.FT , 53 SQ.M
MAIN FLOOR	:	623 SQ.FT , 57 SQ.M
SECOND FLOOR	:	811 SQ.FT , 75 SQ.M
TOTAL AREA	:	2,009 SQ.FT , 186 SQ.M



55 Dodman Crescent

TOTAL APPROX. FLOOR AREA 2,009 SQ.FT , 186 SQ.M

Whilst every attempt has been made to ensure the accuracy of the floor plan contained here, measurements of doors, windows, rooms and any other items are approximate and no responsibility is taken for any error, omission, or misstatement. This plan is for illustrative purposes only and should be used as such by any prospective purchaser.

BASEMENT	:	575 SQ.FT , 53 SQ.M
MAIN FLOOR	:	623 SQ.FT , 57 SQ.M
SECOND FLOOR	:	811 SQ.FT , 75 SQ.M
TOTAL AREA	:	2,009 SQ.FT , 186 SQ.M



55 Dodman Crescent

TOTAL APPROX. FLOOR AREA 2,009 SQ.FT , 186 SQ.M

Whilst every attempt has been made to ensure the accuracy of the floor plan contained here, measurements of doors, windows, rooms and any other items are approximate and no responsibility is taken for any error, omission, or misstatement. This plan is for illustrative purposes only and should be used as such by any prospective purchaser.

BASEMENT	:	575 SQ.FT , 53 SQ.M
MAIN FLOOR	:	623 SQ.FT , 57 SQ.M
SECOND FLOOR	:	811 SQ.FT , 75 SQ.M
TOTAL AREA	:	2,009 SQ.FT , 186 SQ.M