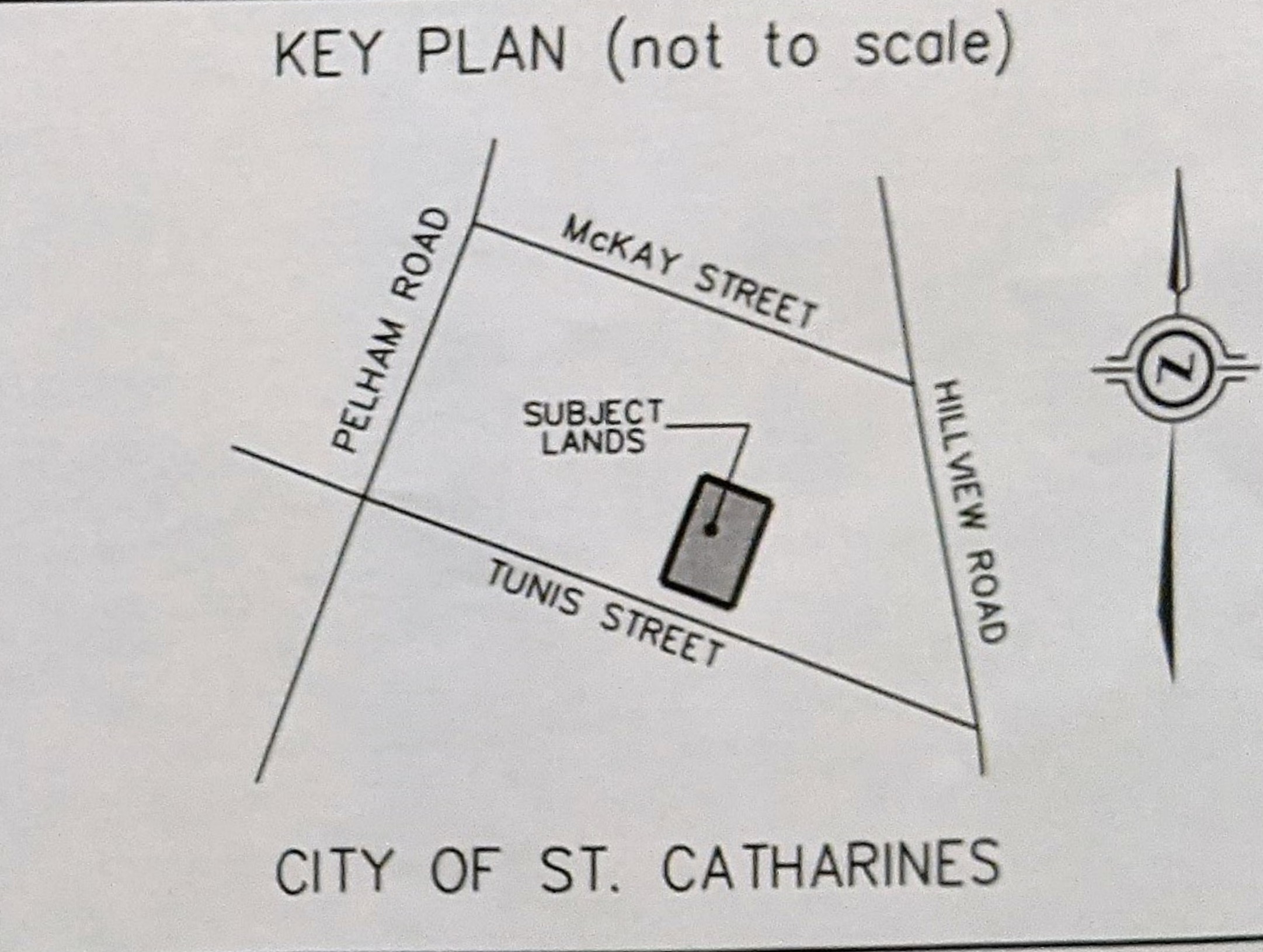


NOTE: THIS SKETCH IS NOT A PLAN OF SURVEY
 SKETCH FOR PLANNING PURPOSES ONLY
66 TUNIS STREET
 CITY OF ST. CATHARINES
 REGIONAL MUNICIPALITY OF NIAGARA
 SCALE 1 : 200

 J.D. BARNES LIMITED
 © COPYRIGHT 2021
METRIC NOTE
 DISTANCES SHOWN ON THIS PLAN ARE IN METRES AND CAN BE CONVERTED TO FEET BY DIVIDING BY 0.3048



LEGAL DESCRIPTION
 LOTS 569 AND 570, TP PLAN 94
 BOUNDARY INFORMATION HAS BEEN DERIVED FROM AVAILABLE RECORDS AND/OR FIELD MEASUREMENTS. THIS IS NOT A PLAN OF SURVEY.
 SOME FEATURES SHOWN ON THIS SKETCH HAVE BEEN DIGITIZED FROM AERIAL PHOTOGRAPHY - LOCATION IS APPROXIMATE.

DATE: JUNE 7, 2021
 SURVEYOR:
 DASHA PAGE
 ONTARIO LAND SURVEYOR

TUNIS STREET
 (MUNICIPAL ROAD - 18.29 WIDE)

CAUTION
 (A) THIS IS NOT A PLAN OF SURVEY AND SHALL NOT BE USED EXCEPT FOR THE PURPOSE INDICATED IN THE TITLE BLOCK.
 (B) THIS SKETCH IS PROTECTED BY COPYRIGHT.

J.D. BARNES LIMITED
 SURVEYING MAPPING GIS
 LAND INFORMATION SPECIALISTS
 4318 PORTAGE ROAD - UNIT 2, NIAGARA FALLS, ON L2E 6A4
 T: (905) 358-3693 F: (905) 358-6224 www.jdbarnes.com

TW	DRAWN
AH	CHECKED
DATED: MAY 21/2021	
Ref. No. 21-16-040-00	