

# SURVEYOR'S REAL PROPERTY REPORT

PART 1, PLAN OF

LOT 56

PLAN 30M-391

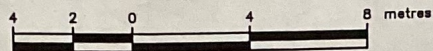
IN THE

TOWN OF GRIMSBY

REGIONAL MUNICIPALITY OF

NIAGARA

SCALE: 1:200 metres



S.D. McLAREN, O.L.S. - 2010

## PART 2

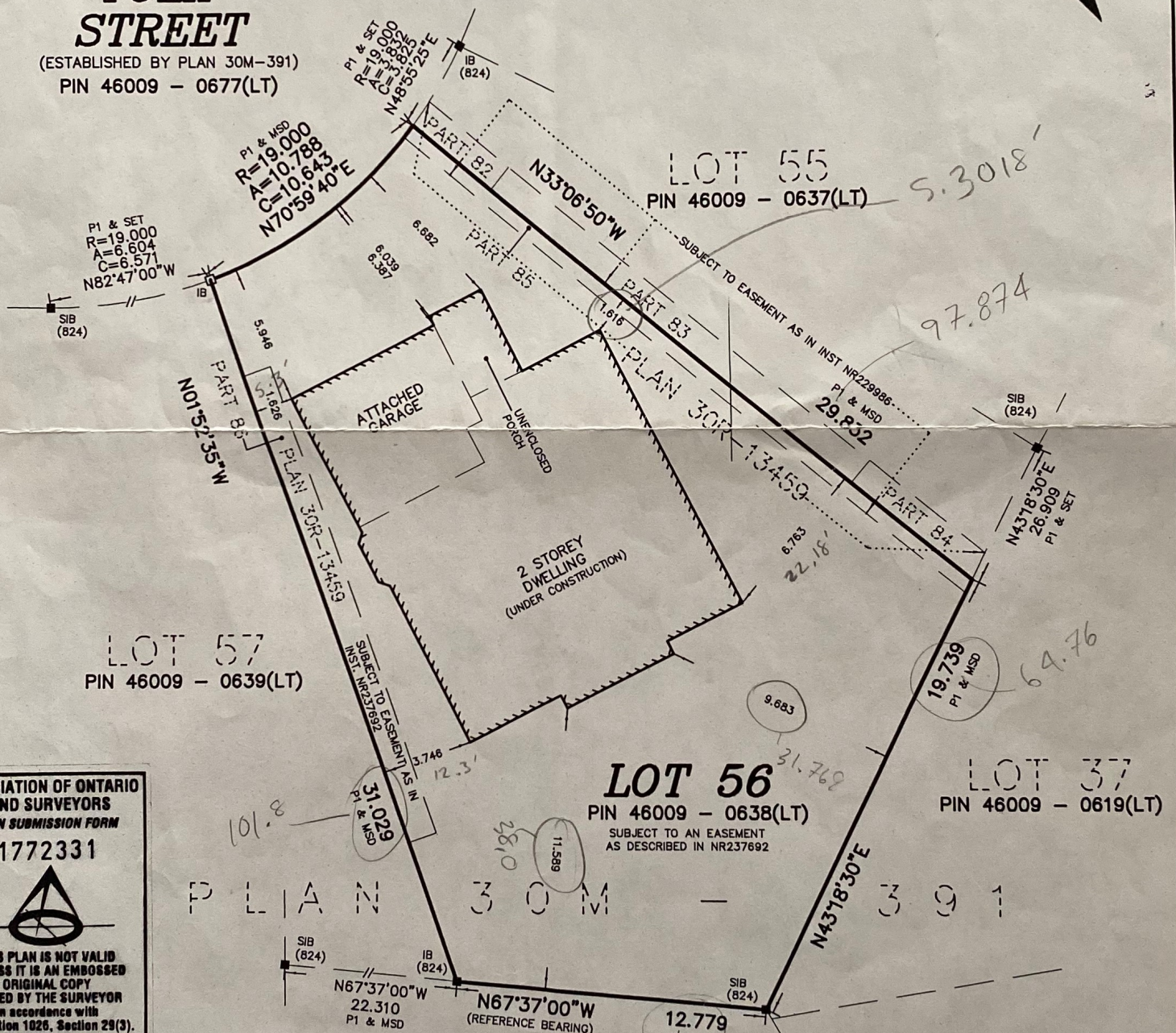
THIS PLAN MUST BE READ IN CONJUNCTION WITH SURVEY REPORT DATED MAY 25, 2010.

THIS PLAN WAS PREPARED FOR LOSANI HOMES LTD.

## TULIP STREET

(ESTABLISHED BY PLAN 30M-391)

PIN 46009 - 0677(LT)



ASSOCIATION OF ONTARIO  
LAND SURVEYORS  
PLAN SUBMISSION FORM

1772331



THIS PLAN IS NOT VALID  
UNLESS IT IS AN EMBOSSED  
ORIGINAL COPY  
ISSUED BY THE SURVEYOR  
in accordance with  
Regulation 1026, Section 29(3).

### METRIC NOTE

DISTANCES SHOWN ON THIS PLAN ARE IN METRES AND CAN BE CONVERTED TO FEET BY DIVIDING BY 0.3048

### BEARING NOTE:

BEARINGS ARE ASTRONOMIC AND ARE REFERRED TO THE SOUTHERLY LIMIT OF LOT 56 AS SHOWN ON PLAN 30M-391 AS BEING N67°37'00"W.

### LEGEND:

■	DENOTES	MONUMENT SET
IB		MONUMENT FOUND
SIB		IRON BAR
CC		STANDARD IRON BAR
(824)		CUT CROSS
MSD		A.T.McLAREN, O.L.S.
PLAN 1		MEASURED
		PLAN 30M-391

### SURVEYOR'S CERTIFICATE:

I CERTIFY THAT:  
1. THIS SURVEY AND PLAN ARE CORRECT AND IN ACCORDANCE WITH THE SURVEYS ACT, THE SURVEYORS ACT AND THE REGULATIONS MADE UNDER THEM  
2. THE SURVEY WAS COMPLETED ON THE 23rd DAY OF MARCH, 2010.

MAY 25, 2010

DATE

S.D. McLAREN, O.L.S.

© S.D. McLAREN, O.L.S. - 2010. NO PERSON MAY COPY, REPRODUCE, DISTRIBUTE OR ALTER THIS PLAN IN WHOLE OR IN PART WITHOUT THE WRITTEN PERMISSION OF S.D. McLAREN, O.L.S.



A.T. McLaren Limited  
LEGAL AND ENGINEERING SURVEYS

69 JOHN STREET SOUTH, SUITE 230  
HAMILTON, ONTARIO, L8N 2B9  
PHONE (905) 527-8559 FAX (905) 527-0032

Drawn LD

Checked ML

Scale 1:200

Dwg.No. 32974-56F