

## BASEMENT

GROSS INTERNAL AREA

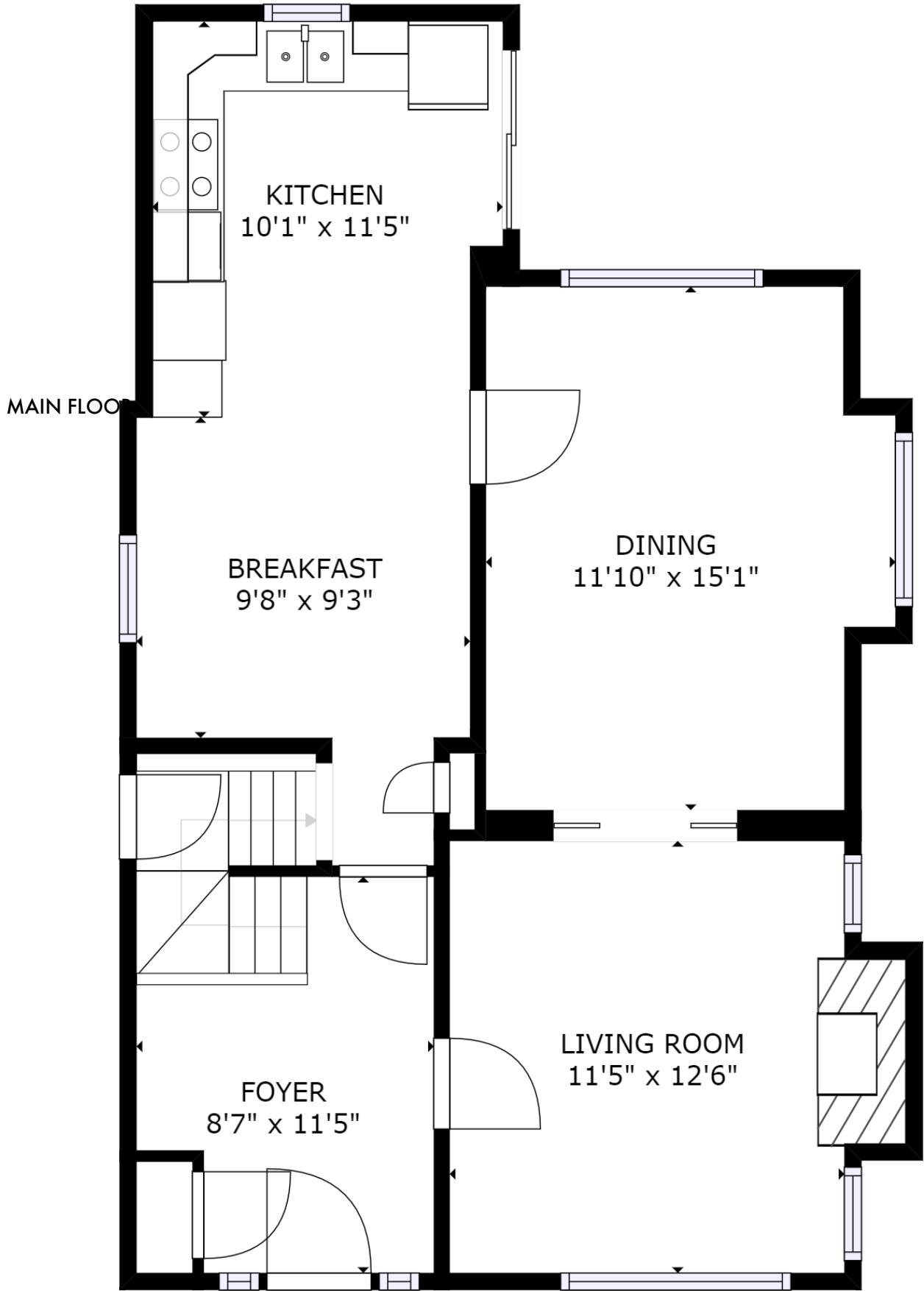
FLOOR 1: 593 sq ft, FLOOR 2: 675 sq ft

FLOOR 3: 614 sq ft, FLOOR 4: 342 sq ft

EXCLUDED AREAS: , REDUCED HEADROOM BELOW 1.5M: 25 sq ft

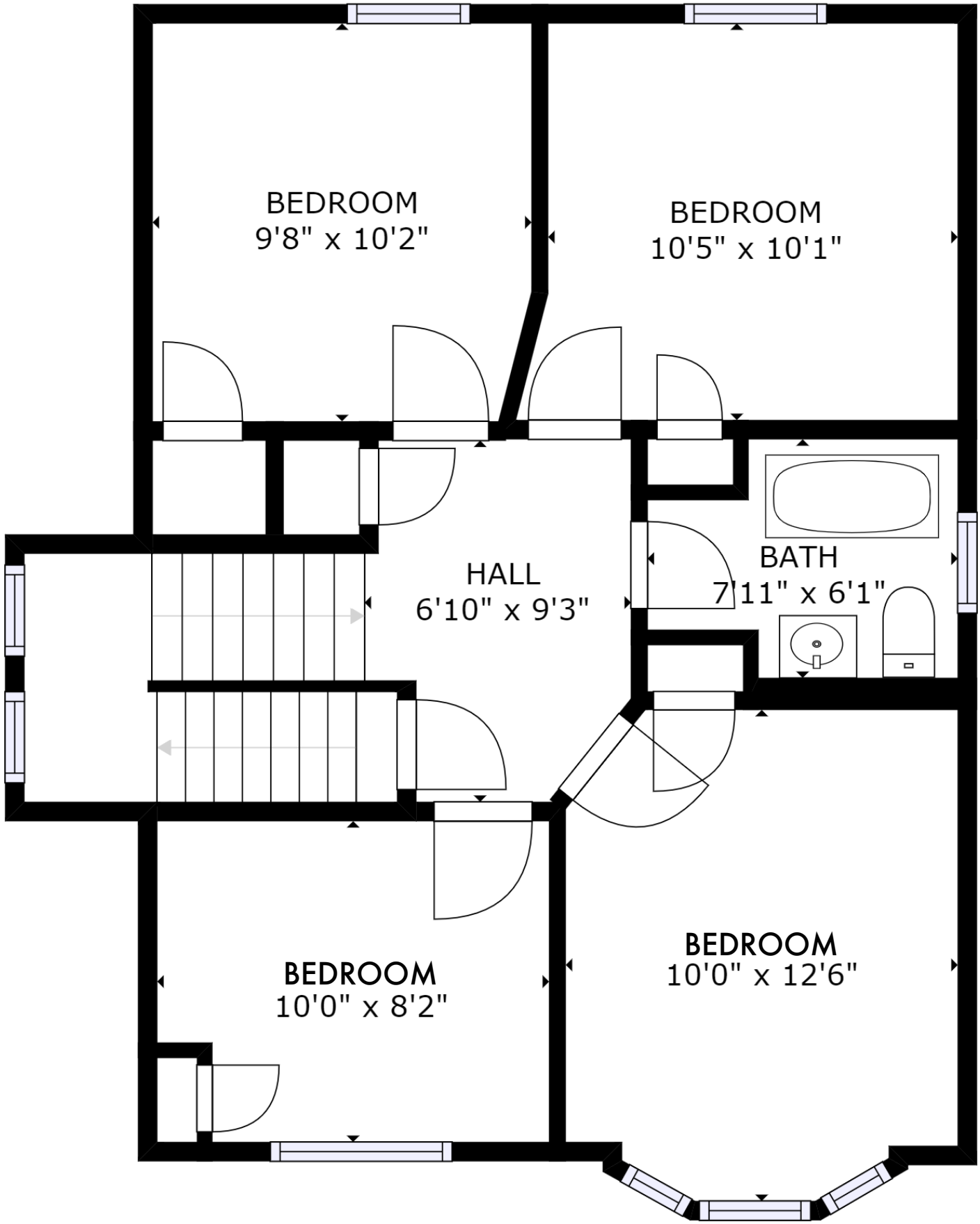
TOTAL: 2224 sq ft

SIZES AND DIMENSIONS ARE APPROXIMATE, ACTUAL MAY VARY.



GROSS INTERNAL AREA  
 FLOOR 1: 593 sq ft, FLOOR 2: 675 sq ft  
 FLOOR 3: 614 sq ft, FLOOR 4: 342 sq ft  
 EXCLUDED AREAS: , REDUCED HEADROOM BELOW 1.5M: 25 sq ft  
 TOTAL: 2224 sq ft

SIZES AND DIMENSIONS ARE APPROXIMATE, ACTUAL MAY VARY.



## SECOND FLOOR

GROSS INTERNAL AREA

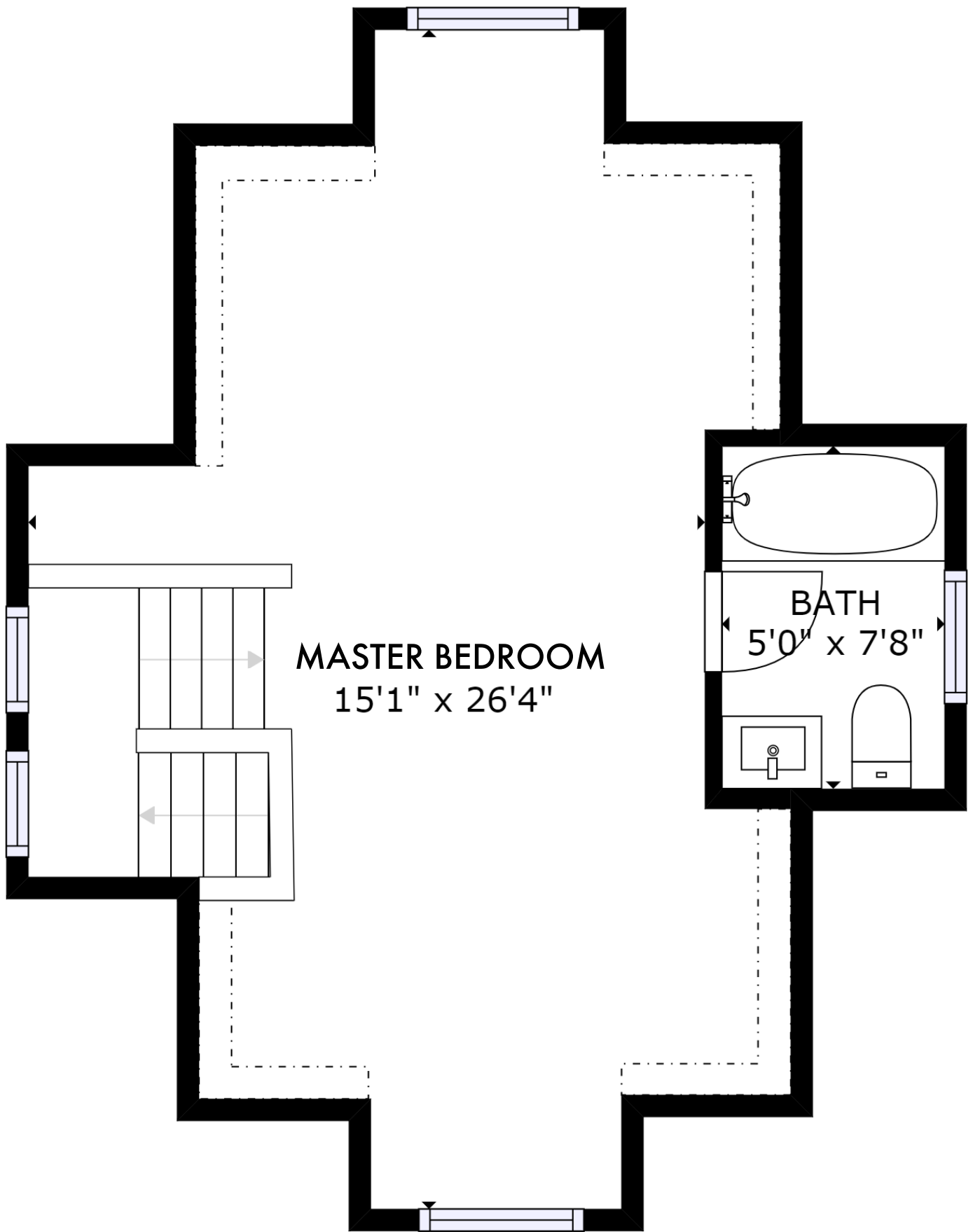
FLOOR 1: 593 sq ft, FLOOR 2: 675 sq ft

FLOOR 3: 614 sq ft, FLOOR 4: 342 sq ft

EXCLUDED AREAS: , REDUCED HEADROOM BELOW 1.5M: 25 sq ft

TOTAL: 2224 sq ft

SIZES AND DIMENSIONS ARE APPROXIMATE, ACTUAL MAY VARY.



**MASTER BEDROOM**  
15'1" x 26'4"

**BATH**  
5'0" x 7'8"

## THIRD FLOOR

GROSS INTERNAL AREA

FLOOR 1: 593 sq ft, FLOOR 2: 675 sq ft

FLOOR 3: 614 sq ft, FLOOR 4: 342 sq ft

EXCLUDED AREAS: , REDUCED HEADROOM BELOW 1.5M: 25 sq ft

TOTAL: 2224 sq ft

SIZES AND DIMENSIONS ARE APPROXIMATE, ACTUAL MAY VARY.